



# ASSAL, COST RICA

SLIDE PRESENTATION SUPPLEMENTING THE KEYNOTE  
SPEECH

OCTOBER 15TH, 2019

BABAK ABBASZADEH, PRESIDENT AND CEO, TORONTO CENTRE

# THE RELEVANCE OF INCLUSIVE INSURANCE TO THE SDGs



## PRIMARY LEVEL

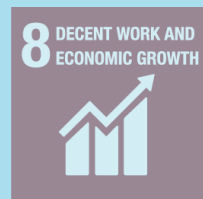
**STRONG  
REGULATION &  
SUPERVISION**



# THE RELEVANCE OF INCLUSIVE INSURANCE TO THE SDGS



**STRONG  
REGULATION &  
SUPERVISION**



## SECONDARY LEVEL

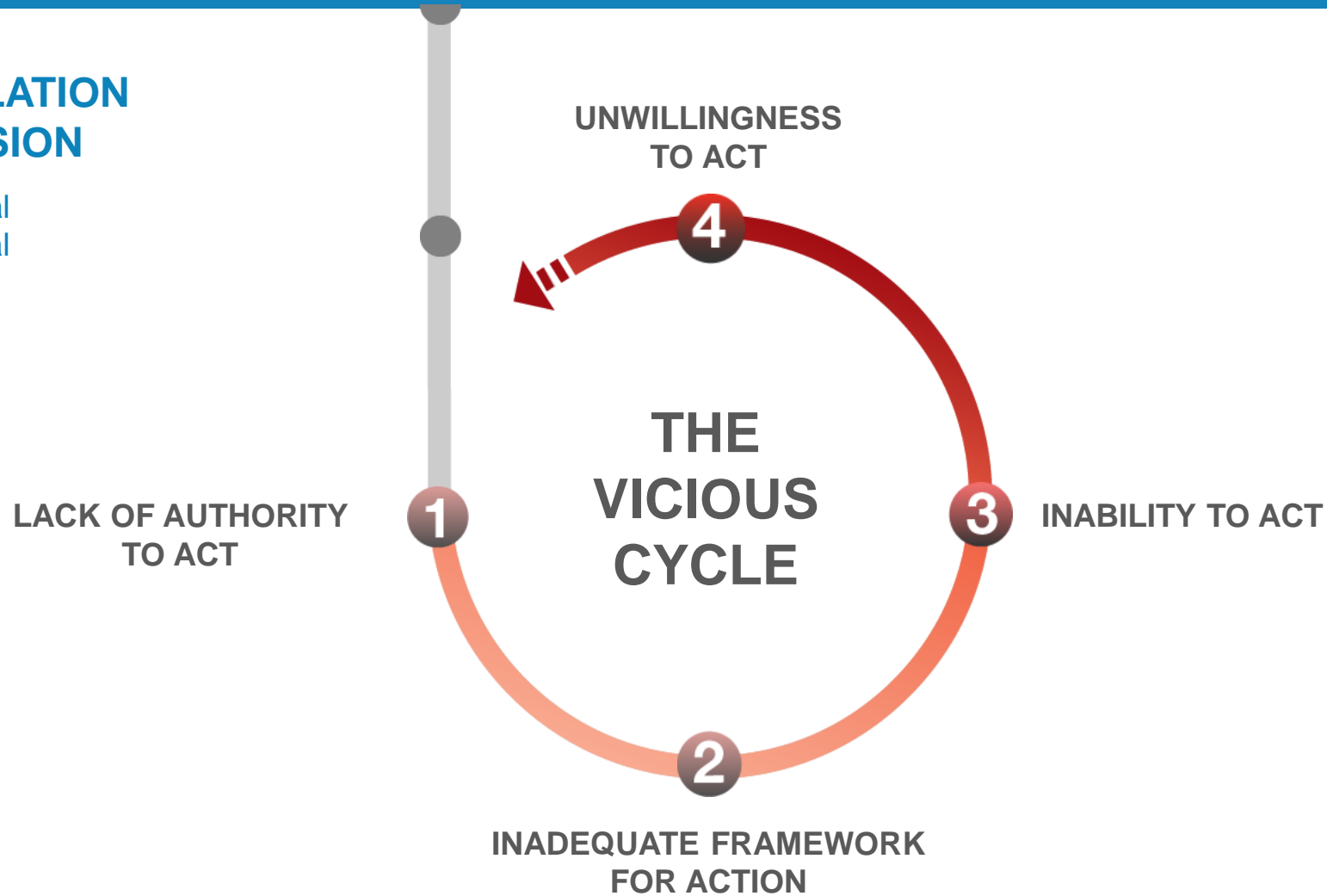


# VICIOUS CYCLE

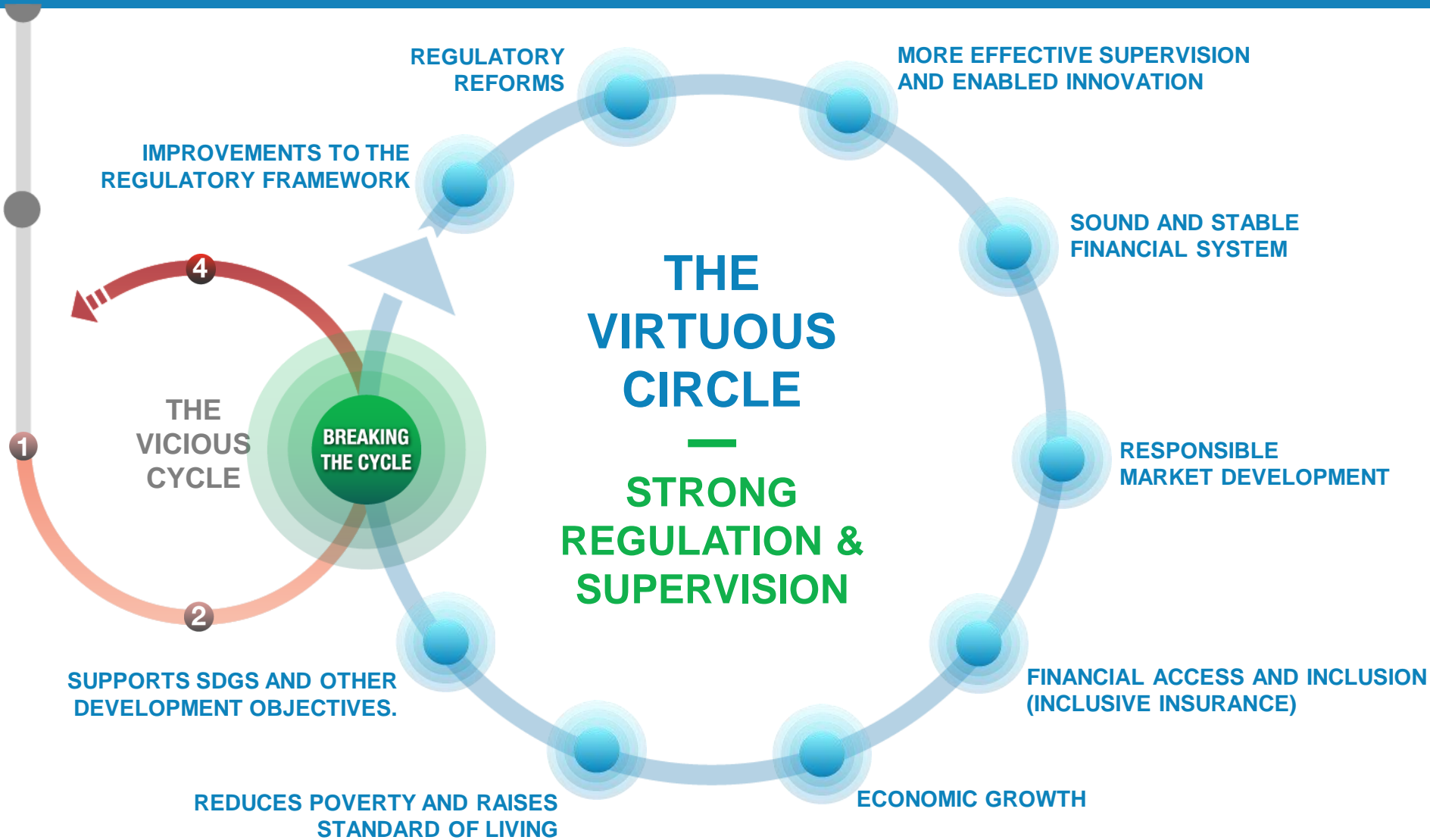


## WEAK REGULATION AND SUPERVISION

Contribute to financial crises and suboptimal economic growth.



# VIRTUOUS CIRCLE



With good capacity building efforts, regulation and supervision can be strengthened and contribute to the SDGs and other development objectives.



# OUR FOUNDERS AND FUNDERS



Global Affairs  
Canada

Affaires mondiales  
Canada



Sida



Schulich  
School of Business  
York University



WORLD BANK GROUP